



Business Focus Group Meeting - Resilient NJ

MEETING MINUTES

DATE: April 26, 2022
TO: All Meeting Attendees
FROM: The Consultant Team
SUBJECT: Resilient NJ-Atlantic County Coastal Communities (ACCR)-Business Focus Group Meeting II

A meeting was held April 7, 2022 at 3 PM with the Business Focus Group Members to discuss the Resilient NJ Project. The meeting was held via Microsoft Teams. The following were in attendance:

Name	Organization
Lou Joyce	South Jersey Economic Development District
Joe Grace	Operating Engineers Local 825
Vince Maione	Orsted
Amy DiCarlantonio	WSP
Jaclyn Flor	ENGenuity Infrastructure
Amanda Schermond	ENGenuity Infrastructure

The following was discussed at the meeting:

1. Jaclyn Flor, ENGenuity, started the meeting with introductions of the Consultant team and meeting participants.
2. Jaclyn Flor then went over the agenda, including the meeting objectives, introductions, Overview of what we heard, feedback on preferred scenario and next steps.
3. Jaclyn Flor explained that the primary objective of the meeting was to get feedback on the following key questions: 1. Based on the feedback provided to date on the Vision for the future of the Region and the Critical Assets that need to be protected, which projects should be advanced into a Preferred Suite of Projects, 2. Which projects would you like to see advanced into the Implementation Phase of this plan? Under the Implementation Phase we can advance projects through their respective planning phases such as concept design, planning studies, grant applications, capacity building, etc., 3. Are there any projects that are critical to the Region that are missing that you would like to see added?
4. Jaclyn Flor explained that the Atlantic County Region won the Innovation Award and that as a result additional funding is available for implementation.

5. Jaclyn Flor gave an overview of the Resilient NJ Project including the project goals and the engagement plan. Jaclyn explained how the scenarios were developed by looking at the vision of the project along with the region's assets.
6. Jaclyn Flor described that the key challenges in the region that were identified were shoreline protection, stormwater management, access and transportation, power and communications, equitable economic development, public facilities, and vulnerable populations.
7. Jaclyn Flor then went over the Scenarios including the Living Bay Master Plan and the Absecon Bay Keepers. Lou Joyce, South Jersey Economic Development District, asked how a non-profit organization like the Absecon Bay Keepers would be started. Jaclyn replied that if the project moves forward then the team would drill down on how the Bay Keeper was created in Hudson County and would model similar to that. Amy DiCarlantonio, WSP, added that there are other non-profits in the area that the project team would meet with to build upon what is already being done. Lou asked what the authority of the Bay Keepers would be. Jaclyn replied that the Steering Committee felt hesitant about any additional regulatory barriers placed on entities in the region. Jaclyn said that this would have to be kept in mind when drilling down the implementation. Lou expressed that he also felt that in New Jersey another organization or regulation is not needed when trying to file a permit but if the Bay Keepers were just an oversight organization without any permitting authority that it would be preferred. Lou asked what value the Bay Keepers would bring.
8. Jaclyn went on to the next Scenarios, which were Translate All Emergency Preparedness Materials, Evaluate and Improve Preparedness Actions for SVPS, Action Plan for Housing, Power and Communications, Installation of Solar Panels, and Community Microgrid Systems Study. Amy added that some of the Scenarios are more long-term and some are short-term. Jaclyn went on to describe the Bayside Shoreline Protection Scenario and explained it would rely on the USACE Back Bay Study. Jaclyn then went on to describe the Bayshore Continuous Shoreline Protection Study, Absecon Bay Blue/Green Way, Beach Nourishment, and Offshore Breakwaters Study. Lou Joyce asked if there were any comments made on there being hazards to navigation. Jaclyn replied that the Steering Committee said that surfing alliance as well as fisherman may be against the design that is shown in the pictures from a navigation standpoint but if the design can be in favor of the surfers and fisherman that there would be support of the project. Lou pointed out that there is also a lot of off-shore boating at that spot.
9. Jaclyn went on to describe the Living Streets Feasibility Study and Pilot Program, Living Streets, Stormwater Management Parks, Equitable Economic Development, Rezone Gardner's Basin and Delta Basin, Black Horse Pike Strategic Growth Corridor, Redevelopment Study and Vision Plan for Lower Risk Areas, and Bader Field Coordinated Dredge-Site Raising Compact Scenarios.
10. Jaclyn Flor also reviewed that some of the feedback so far has been to implement a home elevation program, wetland restoration, expanding community solar, additional pump station locations, development of resiliency and wind institute, Stormwater Utilities, resiliency improvements for the ACMUA treatment plan, elevating roadways, blue economy expansion and to expand transit evacuation options.
11. Jaclyn Flor then asked for any additional feedback from the meeting participants. Lou Joyce said that the NJEDA is developing a wind institute at the EDA. He also said that pump stations can be

taken out with flooding. Jaclyn replied that we will be looking at back up power due to the flooding concern. Vince Maione, Orsted, asked what the time table for the implementation was. Jaclyn said some are short-term and some are long-term and that DEP understands the scenarios are a mix of both. She said the additional budget that was won in the Innovation Award would go to some short-term scenarios. Vincent said he agrees with that plan and asked what the time table would be for some of the short-term projects. Jaclyn replied that revising of emergency materials could happen within a year but something like raising Black Horse Pike would take about five years. Vincent went on to say that the NJEDA has already awarded \$3 Million to Atlantic Cape Community College to develop a wind institute and \$1 Million was awarded to Rowan College to do training for off-shore wind. Vincent also said that New Jersey BPU is in the process of putting something in place for a micro-grid in Atlantic City. Vincent said overall he felt the scenarios had value and as long as there wouldn't be any regulatory changes that there shouldn't be any problems implementing them.

Action Items:

1. Public Meeting first week of may for last feedback on projects
2. Consultant Team to meet with DEP to discuss which projects are moving forward.
3. Action Plan will be mid-summer.

ATLANTIC COUNTY COASTAL REGION

VENTNOR, MARGATE, LONGPORT, ATLANTIC
CITY, BRIGANTINE, PLEASANTVILLE,
NORTHFIELD

Focus Group Meeting

4.7.22



Agenda

- I. Meeting Objectives
- II. Introductions
- III. Overview of What We Heard
- IV. Feedback on Preferred Scenario
- V. Next Steps

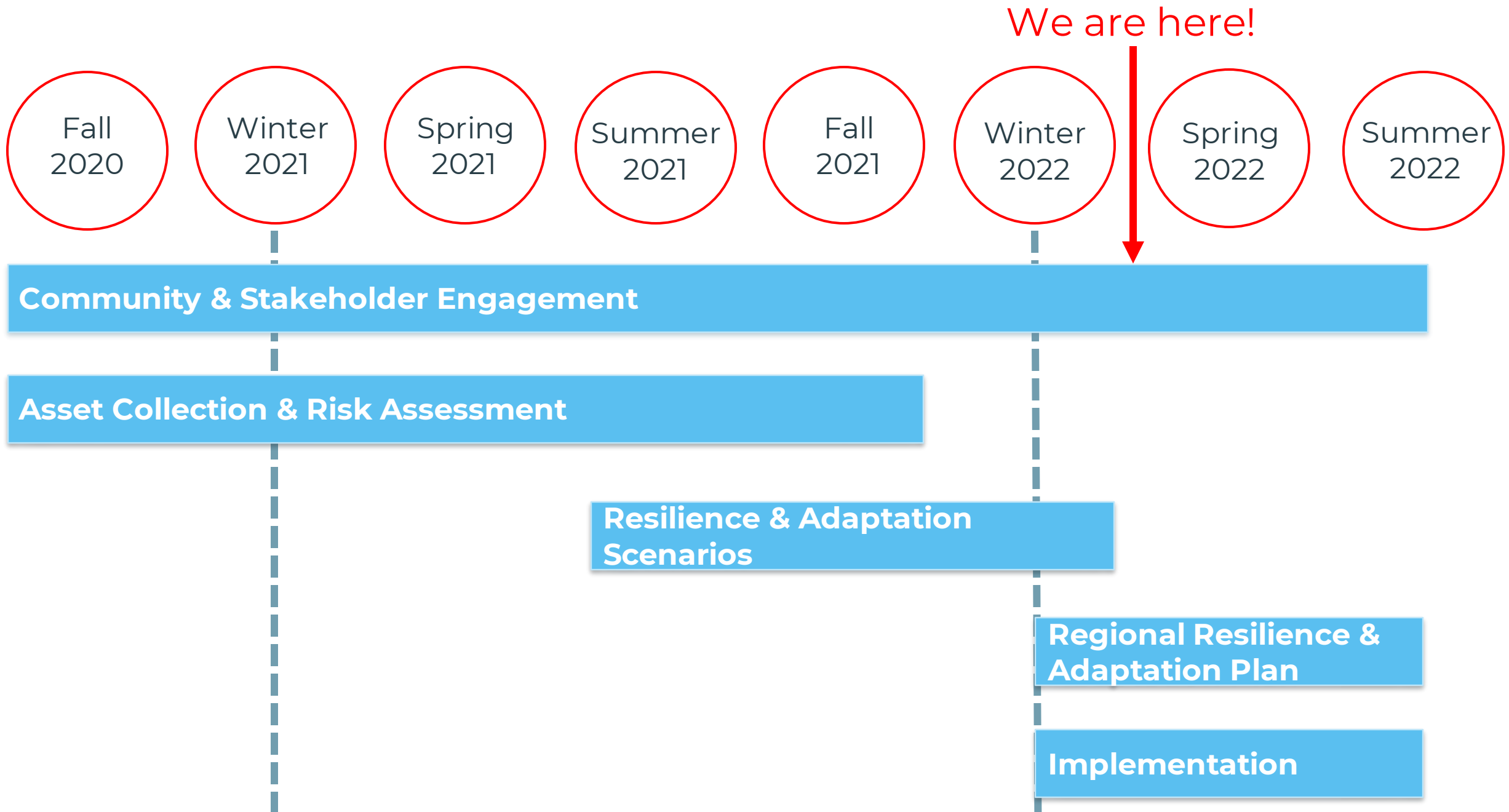


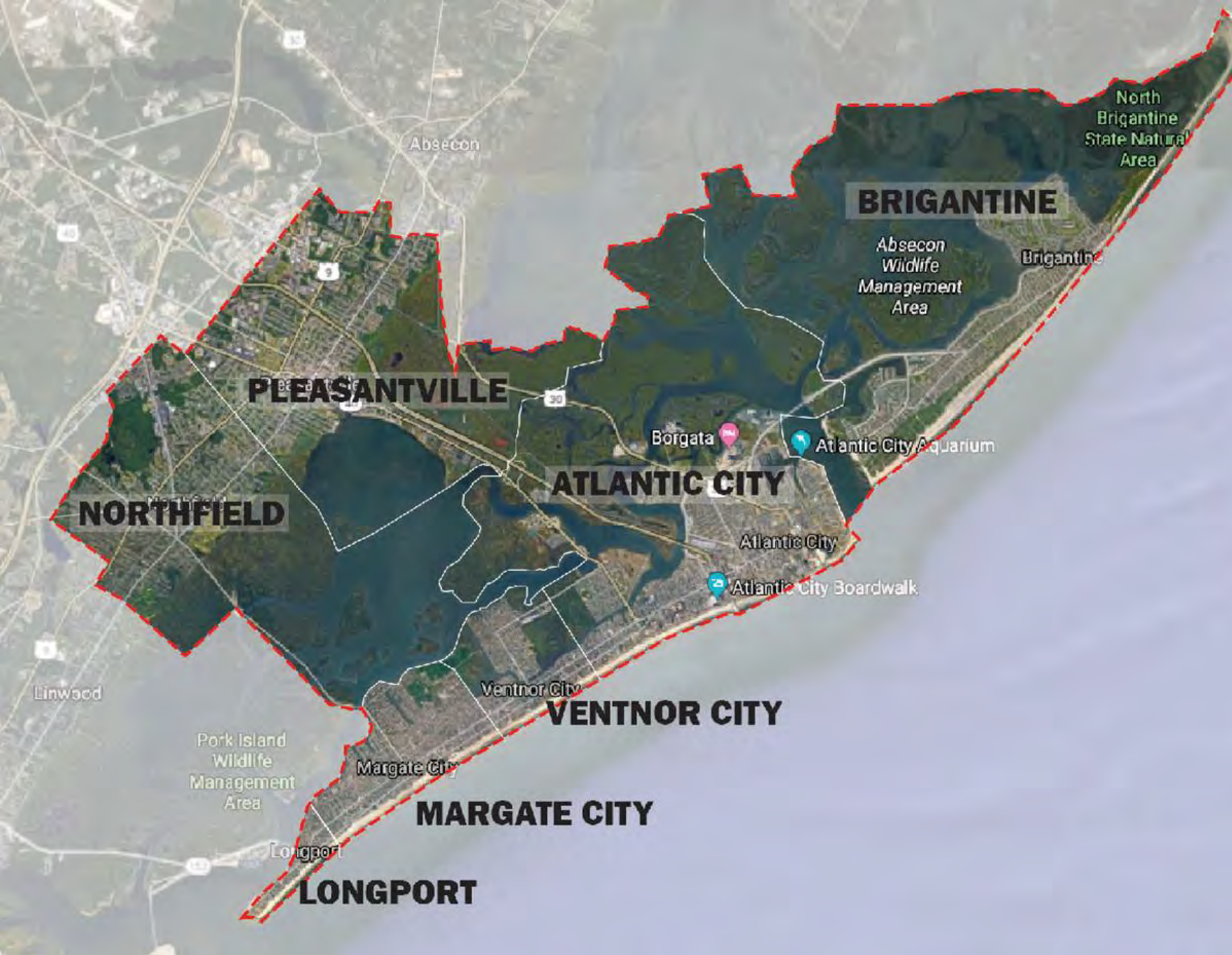
Meeting Objectives

Today, we are seeking answers to these key questions:

- *Based on the feedback provided to date on the Vision for the future of the Region and the Critical Assets that need to be protected, which projects should be advanced into a Preferred Suite of Projects?*
- *Which projects would you like to see advanced to into the Implementation Phase of this plan? Under the Implementation Phase we can advance projects through their respective planning phases such as concept design, planning studies, grant applications, capacity building, etc.*
- *Are there any projects that are critical to the Region that are missing that you would like to see added?*

Introductions





American
Red Cross

PrepareNJ

Overview

Resilient NJ Project

Goal: locally-driven action plan.

- a) Stakeholder involvement throughout project
- b) Ensure local needs and visions are collaboratively developed
- c) Ensure actions are best-fit to unique characteristics of neighborhoods
- d) Achieve coherent strategy across region and broader Resilient NJ program

ENGAGEMENT PLAN



**Steering
Committee (SC)**



**Technical
Advisory
Committee (TAC)**



**Community
Advisory
Committee (CAC)**



Focus Groups (FG)

You are in a Focus Group



The Region is proud of its social fabric, diverse economy, and ecological assets

- A World Class Destination
- A Place People come to Gather
 - Conventions
 - Competitions & Pageants
 - Research & Innovation
 - Collaboration
- Critical to South Jersey's economy
 - Service Industry
 - Transportation
 - Energy
 - Healthcare
 - Marine
 - Education
- Values Large employers and Small Businesses

The Region is proud of its social fabric, diverse economy, and ecological assets

- Connections with Nature
- Rich in ecological resources
 - Marshlands
 - Parks
 - Beaches
 - Waterways
- Characterized by its Diversity
 - People
 - Destinations
 - Landscapes
 - Activities
 - Modes of Transportation
- Innovation in Green Technologies

A resilience ecosystem. ACCR has increasingly integrated systems.

Asset Categories

Categories of Asset Types



City Halls	Municipal Buildings
Court Houses	Police Departments
Fire Departments	Post Offices/Delivery
Department of Public Works	Office of Emergency Management



Bridges	Power Plants
Bike Share Stations	Prisons
Brownfields	Rail
Bus Stops & Routes	Recycling Centers
Contaminated Sites	Roads
Culverts	Superfund Sites
Drainage Systems	Trails and Paths
Evacuations Routes	Utilities/Cell & Internet
Flood Control Structures	Water Towers



Banks/Financial	Individual Businesses
Business Districts	Industrial Structures
Commercial Structures	Large Employers



Beaches	Open Space
Ecosystems	Parks



Animal Shelter	Hospitals
Assisted Living Facilities	Mental Health Facilities
Dentist Offices	Nursing Homes
Doctors' Offices	Drug Treatment Services
Farmer's Markets	Recreation Centers
Food Assistance	Urgent Care Facilities

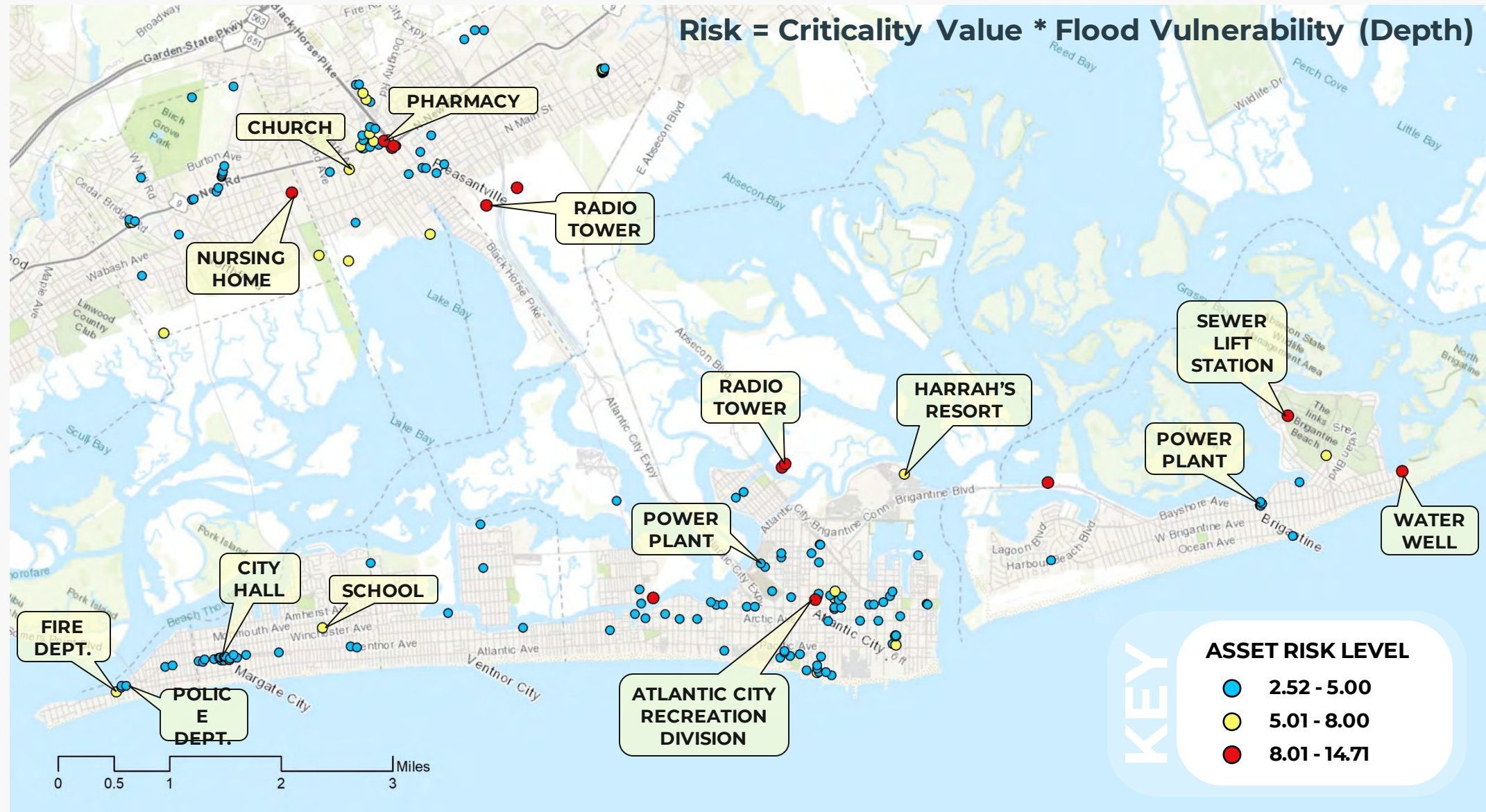


Art Studios	Libraries
Boardwalks	Marinas
Festivals	Parades
Community Centers	Places of Worship
Shuttle Services	Schools
Fairs	Social Networks



Apartments	Shelters
Single Family Homes	Townhouses/Rowhomes
Duplexes	Trailer Parks
Multiplexes	Repetitive Loss (RL) and Severe Repetitive Loss (SRL) Properties
Identification of Buildings with NFIP Policies	

Critical Assets at Risk

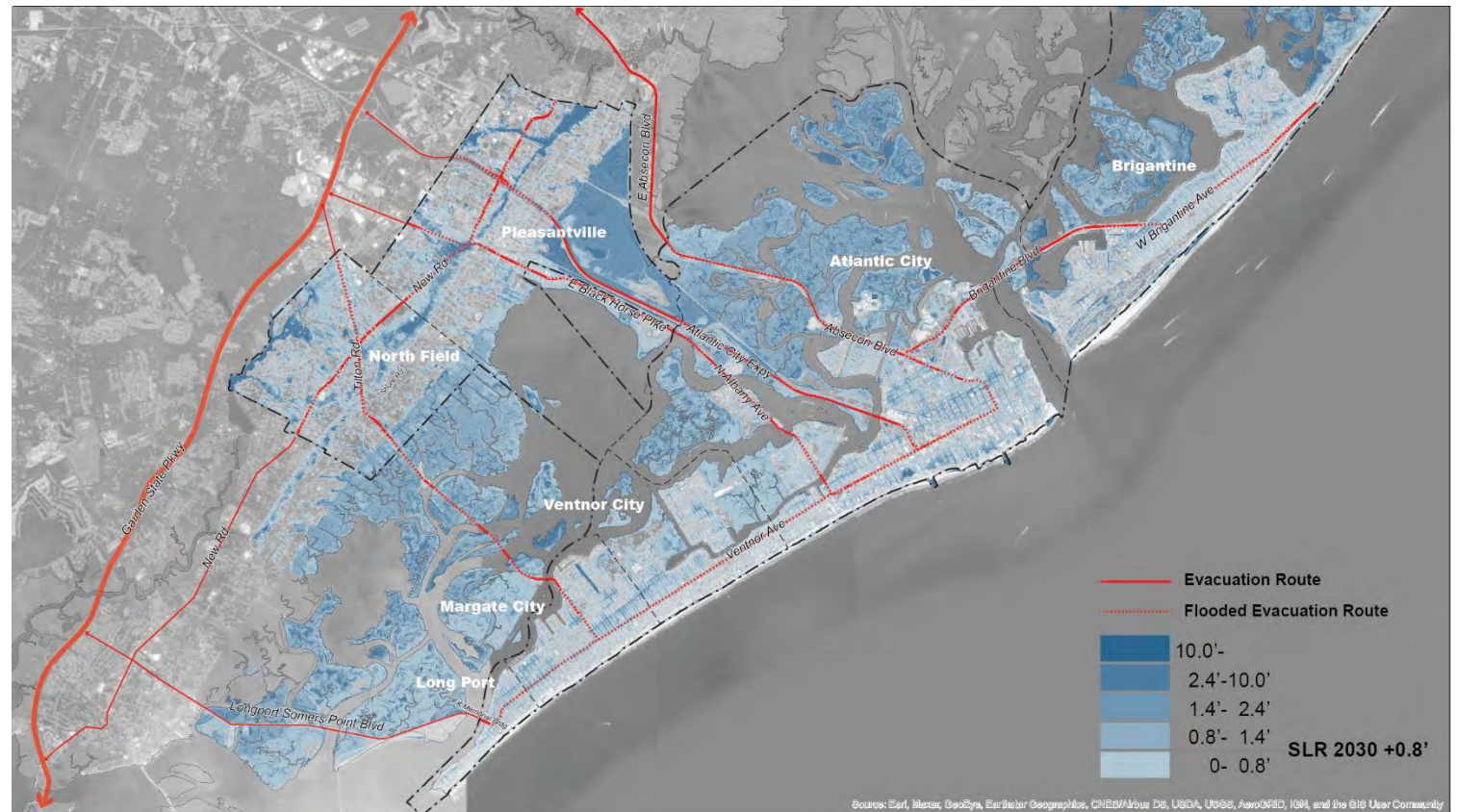
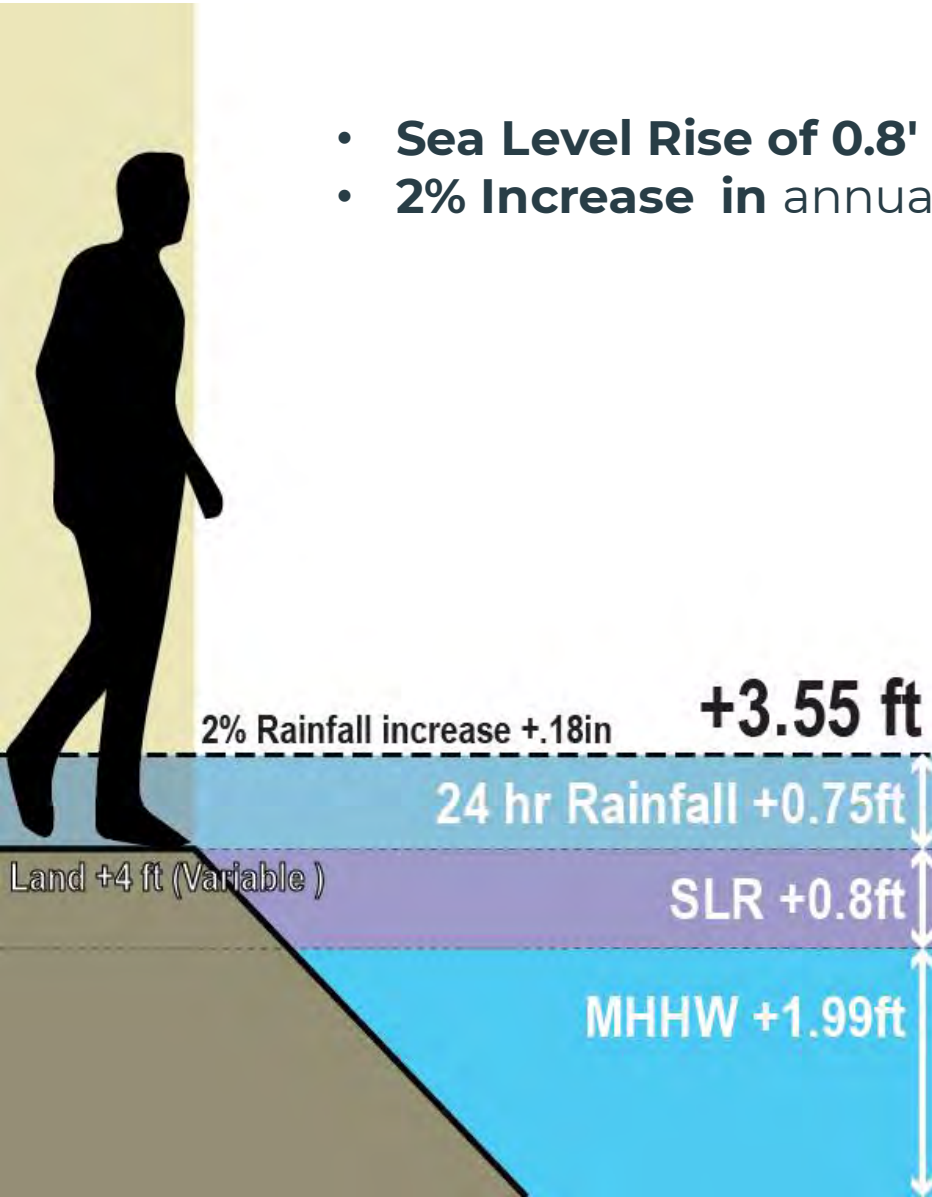


PROPOSED

1% / 24-HOUR RAINSTORM: 2030

The amount of **rain** that will accumulate in a **24-hour** period for a **storm** with a **1-in-100** (or **1%**) chance of occurring in 2030

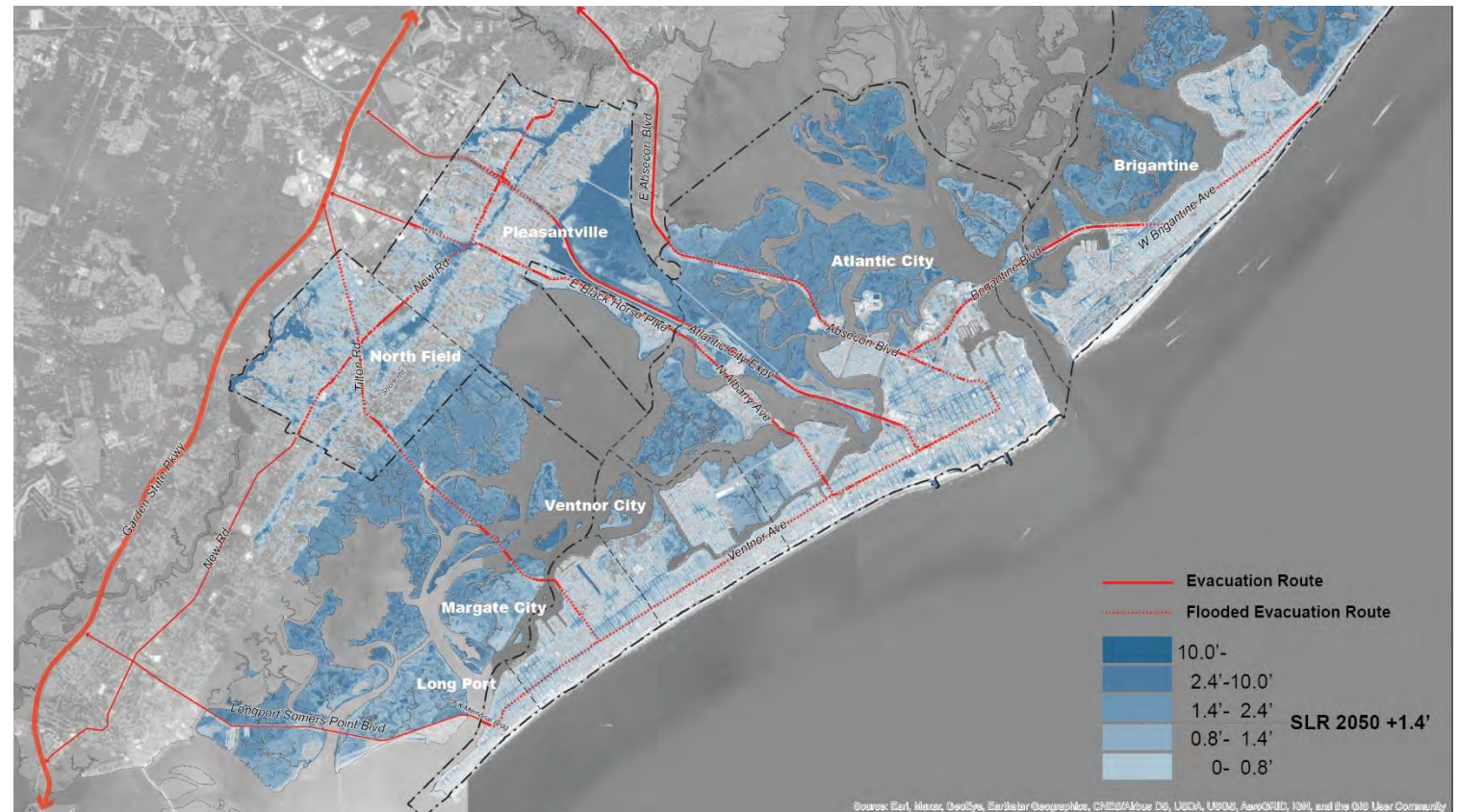
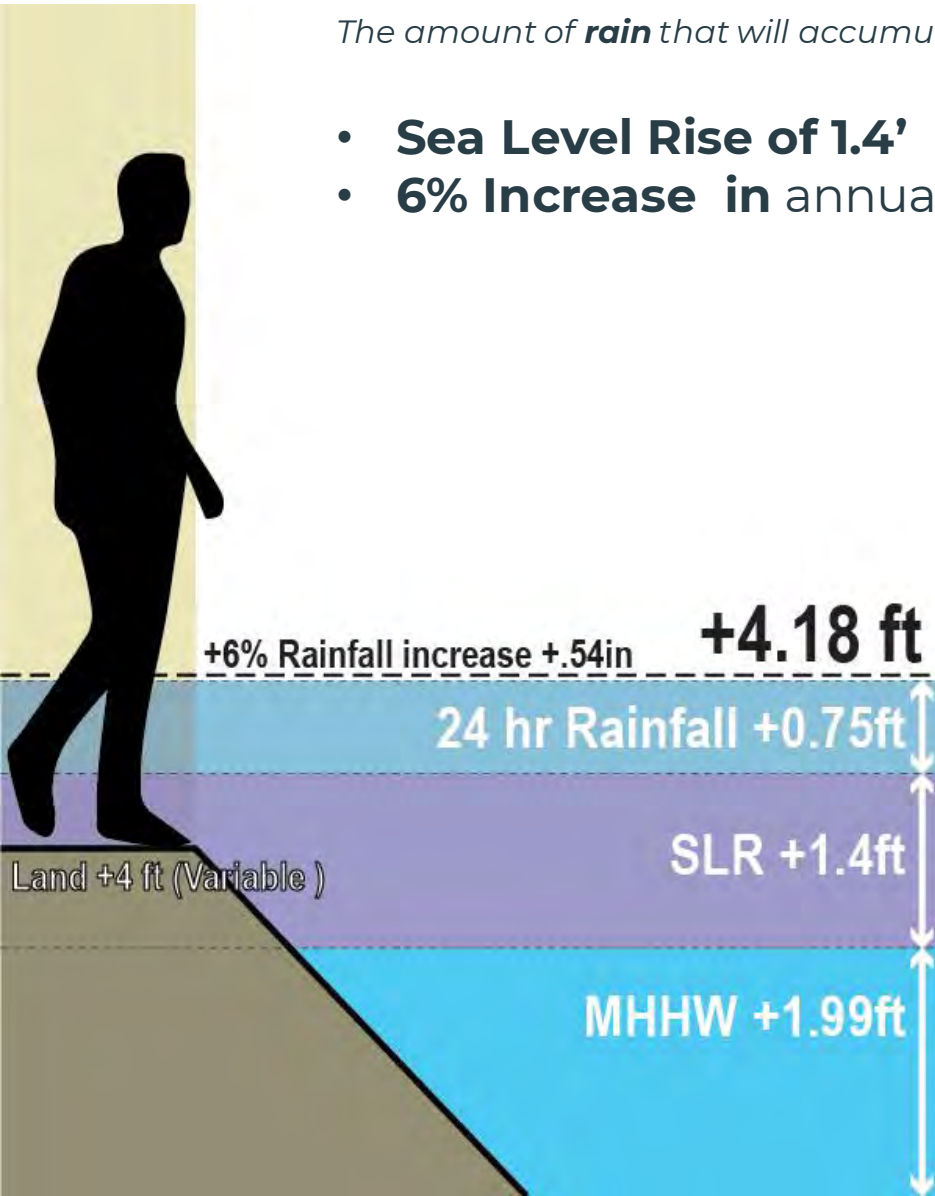
- **Sea Level Rise of 0.8'**
- **2% Increase** in annual precipitation



1% / 24-HOUR RAINSTORM: 2050

The amount of **rain** that will accumulate in a **24-hour** period for a **storm** with a **1-in-100** (or **1%**) chance of occurring in 2050

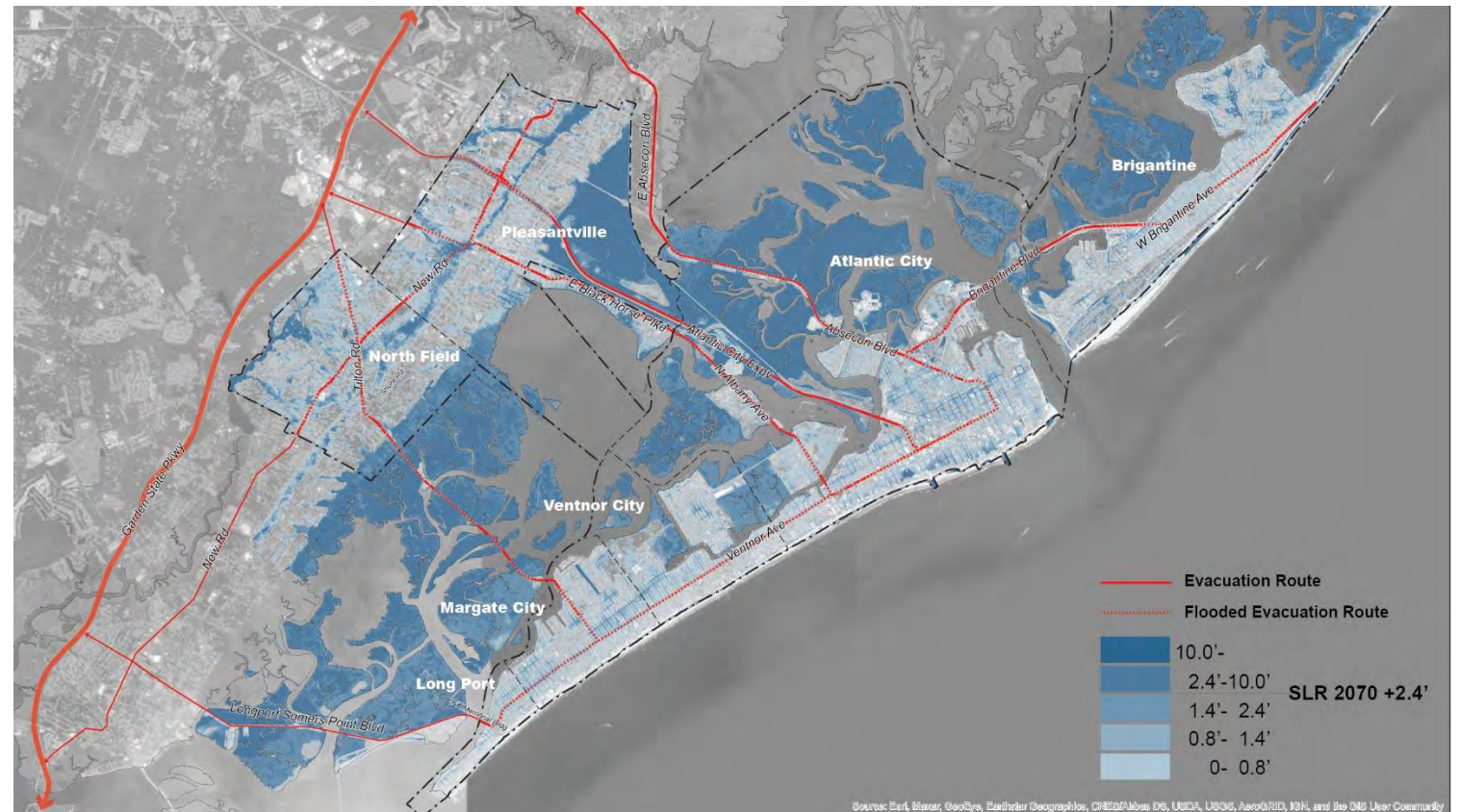
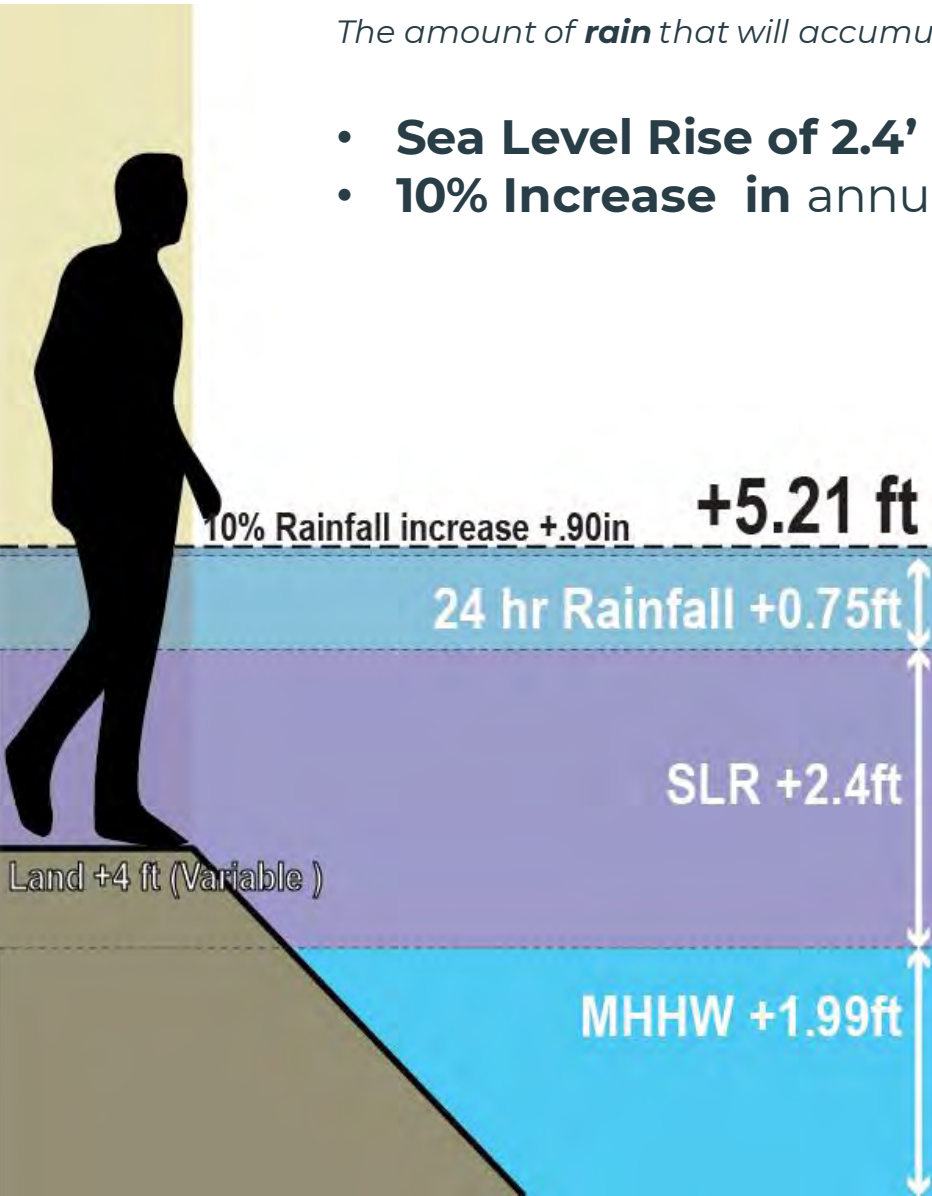
- **Sea Level Rise of 1.4'**
- **6% Increase** in annual precipitation



1% / 24-HOUR RAINSTORM: 2070

The amount of **rain** that will accumulate in a **24-hour** period for a **storm** with a **1-in-100** (or **1%**) chance of occurring in 2070

- **Sea Level Rise of 2.4'**
- **10% Increase** in annual precipitation



SCENARIOS ARE BASED ON THE TEAM'S UNDERSTANDING OF THE REGION'S:

- **Vision** – *What do we value, and how can we see the region evolving to meet the challenges of the future?*
- **Assets** – *What do we want to protect?*
- **Risk and Vulnerability** – *Which areas are at risk?*

RESILIENCE AND ADAPTATION SCENARIOS

What is a Resilience and Adaptation Scenario?

A suite of actions that will work collectively to increase resiliency over time.

What actions should be included?

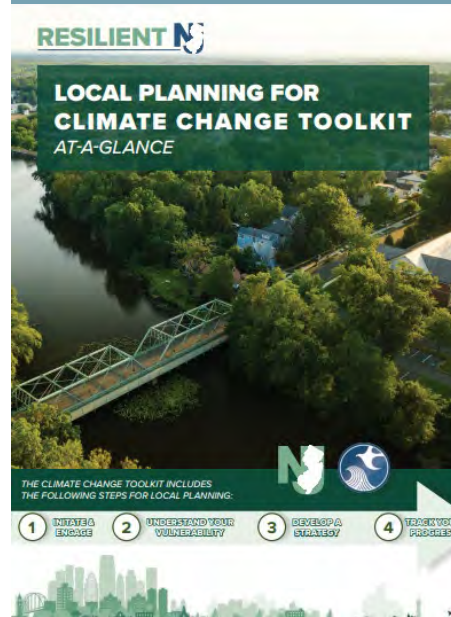
FLOOD MITIGATION PROJECTS



CAPITAL IMPROVEMENT PROJECTS



FUTURE STUDIES/ANALYSIS



PLANNING AND REGULATORY ACTIONS



COMMUNICATION OR OUTREACH ACTIVITIES

Coastal Training Program



The Coastal Training Program provides up-to-date scientific assessments to technologies and skill-building opportunities responsible for making decisions about coastal resources.

NJ FLOOD MAPPER

This interactive mapping website was designed and created to provide a user-friendly visualization tool that will help get information into the hands of local communities who need to make decisions concerning flooding hazards and sea level rise. This website should be used to promote enhanced preparedness and land use planning decisions with considerations for possible future conditions.

GETTING TO RESILIENCE

"Getting to Resilience" is an online self-assessment developed to assist communities in reducing vulnerability and increase preparedness by linking planning, mitigation and adaptation. Developed to be used in association with NJFloodMapper.org, Getting to Resilience is the next step in communities planning for the risks associated with coastal hazards, climate change and sea level rise.

PROGRAM ARCHIVES

Browse useful resources and past program

Key Challenges to Address

SHORELINE PROTECTION



STORMWATER MANAGEMENT



ACCESS & TRANSPORTATION



POWER & COMMUNICATIONS



EQUITABLE ECONOMIC DEVELOPMENT



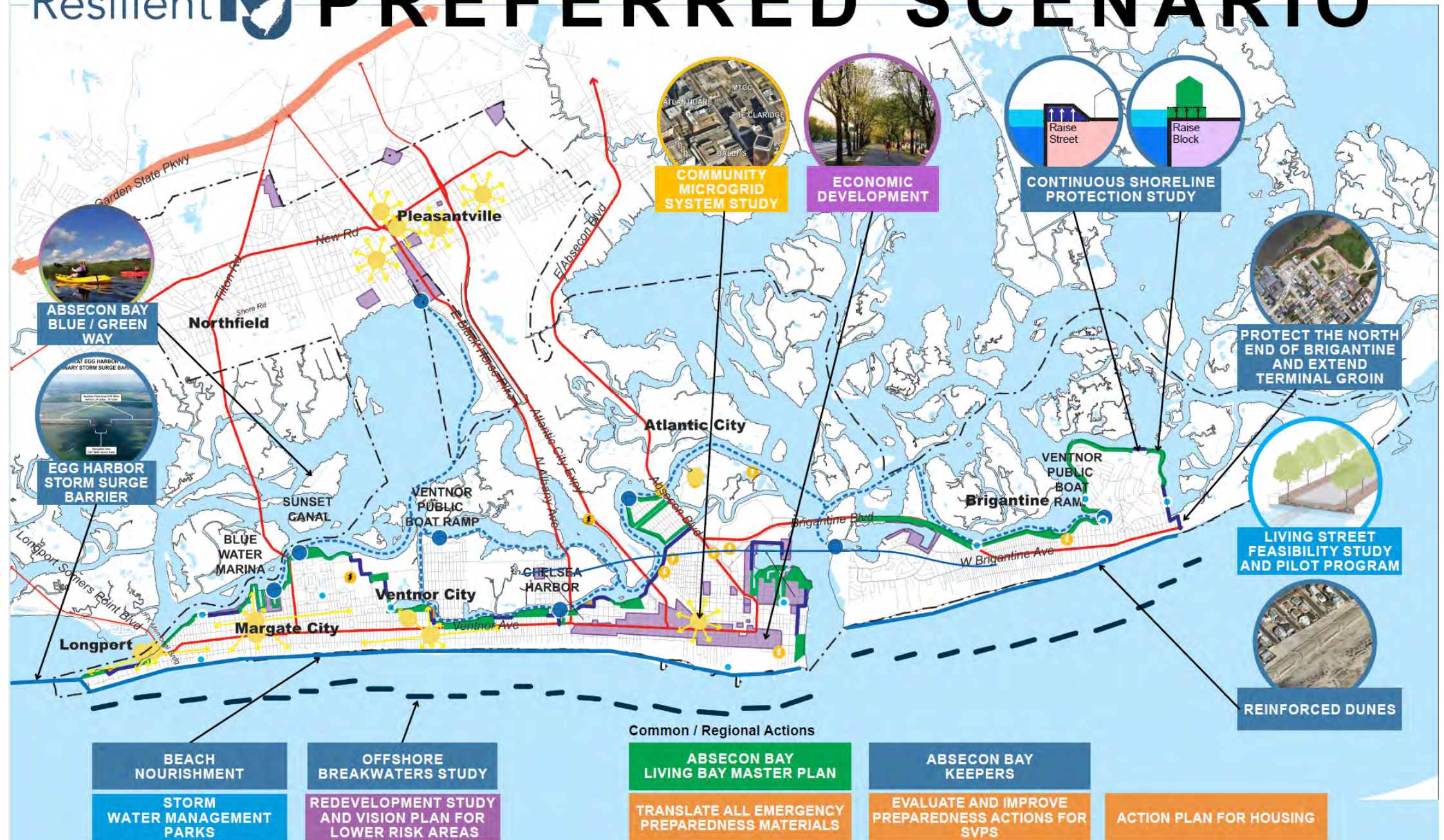
PUBLIC FACILITIES



VULNERABLE POPULATIONS



Resilient **PREFERRED SCENARIO**



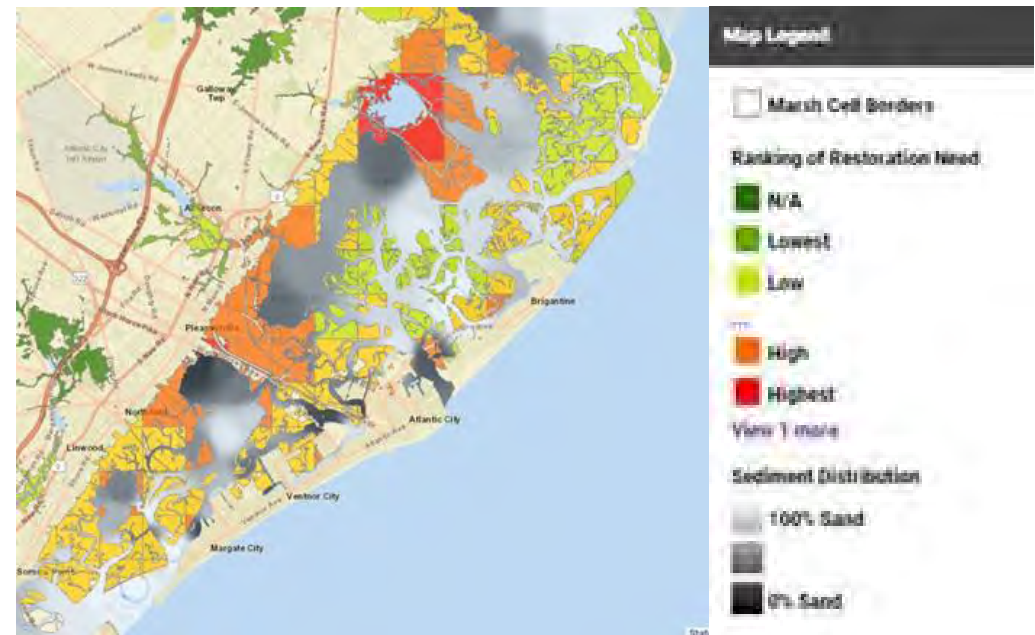
Living Bay Master Plan

Challenges

- Prolonged inundation, erosion and loss due to sea level rise in Back Bay Marshes will weaken protection of the surrounding communities and infrastructure from damage due to storm surge.
- Long term maintenance of the back bay tidal marshes requires ***coordinated and securely funded intervention***.
- Implementing coastal resiliency ***projects within the region will likely face delays due to a backlog*** of applications

Goals

- Provide a framework to establish condition monitoring,
- Prioritize actions to restore habitats through thin-layer sand deposition in targeted locations and living shoreline improvements and coordinated use of resources (dredge sand) and funding.
- Create a means to streamline permit reviews resiliency projects, establish broader or more flexible limits for General Permits and expand use of In-Lieu-Fee mitigation option.
- Public Education to recognize the importance and value of back bay tidal wetlands in protecting the region from storm surge



THE ABSECON BAY KEEPERS

Establish a new non-profit organization: the Absecon Bay Keepers

Absecon Bay Keepers will be a non-profit organization focused on stewardship of Absecon Bay, and working on behalf of the people and wildlife that depend on Bay through environmental action, advocacy, education.



- **Carry out the mission through a combination of:**
 - formal and nonformal environmental education programs designed to raise awareness of the residents and visitors to the region.
 - Work to protect, preserve and restore the various fish and wildlife habitats that exist within the watershed.
- **Act as steward for Absecon Bay by:**
 - Promoting responsible, sustainable development.
 - Working with local, county and state planners to ensure that land-use planning decisions reflect up-to-date science.
 - Provide a resource to assist local, state and federal agencies to identify threats to the resiliency of the Bay and the abutting communities;
 - Promoting comprehensive planning to guide the future of Absecon Bay

[illegible]

Language spoken at home by 5% or greater of Atlantic County residents 5 years and over

Arabic	Spanish
Chinese	Tagalog
German	Urdu
Persian	Vietnamese

Atlantic Ocean

0 1 2 4 6 Miles

N

Translate all Emergency Preparedness Materials into the multiple languages to reach all of the region's communities.

EVALUATE AND IMPROVE PREPAREDNESS ACTIONS FOR SVPS

- **Shelters**

- Designated shelter for people w/ disabilities; children w/ special needs
- Power outlets for medical devices & accessible bathrooms
- Program focused on single parents
- Support services for residents w/ pets
- Food services to accommodate allergies/special diets



**American
Red Cross**



**BOYS & GIRLS CLUBS
OF AMERICA**

- **Evacuation**

- Evacuation vehicles to accommodate people with medical issues or medical devices
- Evacuation personnel training/planning (e.g., movement of medical equipment, people w/ disabilities, older adults in high-rise buildings)

- **Outreach and Education**

- Consistent region-wide evacuation plan information (social media and non-digital channels)
- Training on how to digitize documents/storage of essential documents for evacuation
- Monthly information sessions about resources and programs available for disaster preparation and assistance (e.g., access to food, medicine, medical devices, blankets etc.

- **Social Services and Wellness**

- Ensure social services (e.g., homeless shelters) are more accessible throughout the region
- Organize special teams to help community members access social service programs and mental health assistance during response/recovery phases.

ACTION PLAN FOR HOUSING

Adaptation Action Plan for Atlantic City & Pleasantville Housing Authority Communities and the Region's Senior Centers

Continuity of Service

- Elevate Electrical and Mechanical Equipment
- Solar Trellises on all surface parking lots
- Solar Panels on all rooftops
- Battery to provide off-grid capacity at night
- Porous paving and green infrastructure planting to aid in stormwater management

Flood Mitigation

- Reprogram Ground Level

Long Term Strategies

Strategic Planning for potential redevelopment of the most vulnerable communities



Rooftop Solar



Solar Trellises



Relocated Mechanical Equipment



Altman Towers



Whittington Senior Living



Walter Buzby



Stanley Village



Charles P Jefferies

POWER AND COMMUNICATIONS

- 1 Harden all above grade utility poles, and bury utilities where possible
- 2 Install new generators at firehouses and other public buildings



INSTALLATION OF SOLAR PANELS

- Require installation of solar panels for all renovation and new construction projects above a specified dollar amount to increase energy resiliency during power outages
- Adopt Incentive Program to encourage installation of solar trellises at surface parking lots and batteries at all buildings to encourage bi-directional charging for electric vehicles



Rooftop Solar



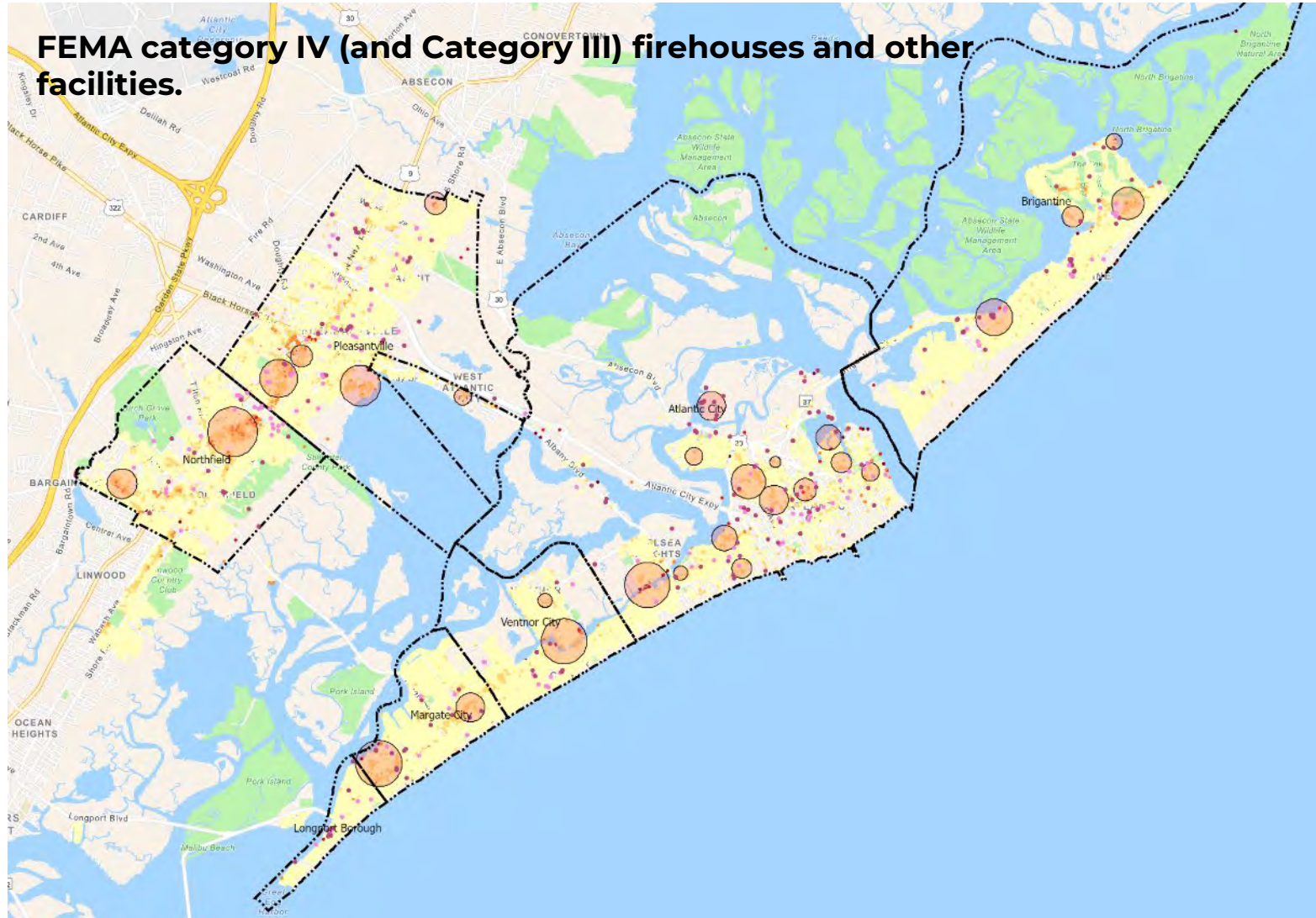
Solar Trellises



Single Housing - Rooftop Solar

COMMUNITY MICROGRID SYSTEMS STUDY

- The microgrid clusters would be associated with facilities that are “Critical Assets at Risk of Flooding” (24hr/1%)
- Microgrids can be centered around schools, public facilities, casinos /hotels or other major sites that can provide emergency services / support.
- Coordinate with Atlantic City Electric (ACE) for access/logistics.



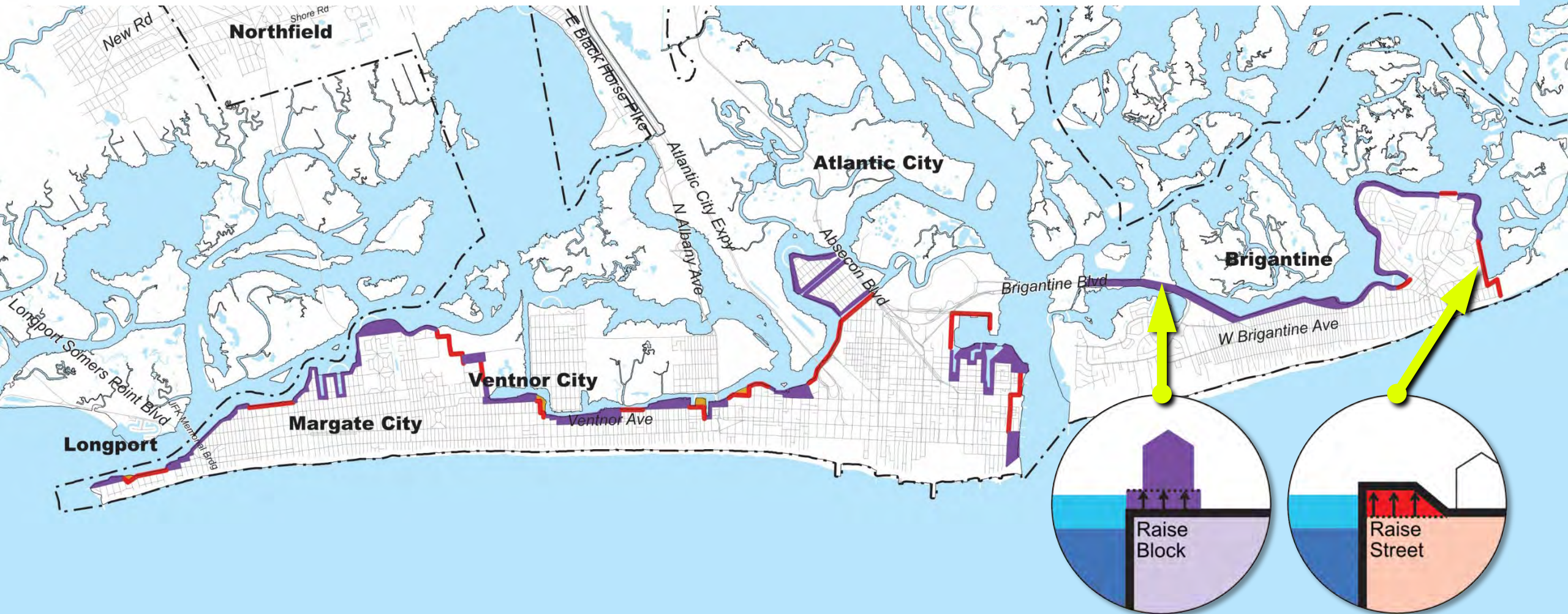
BAYSIDE SHORELINE PROTECTION

- 1 Rely on the plan proposed in the **USACE Back Bay Plan, Great Egg Harbor Inlet SSB** to protect bayside from storm surge events
- 2 Install sheet pile dune core
- 3 Reinforce dunes
- 4 New bulkhead



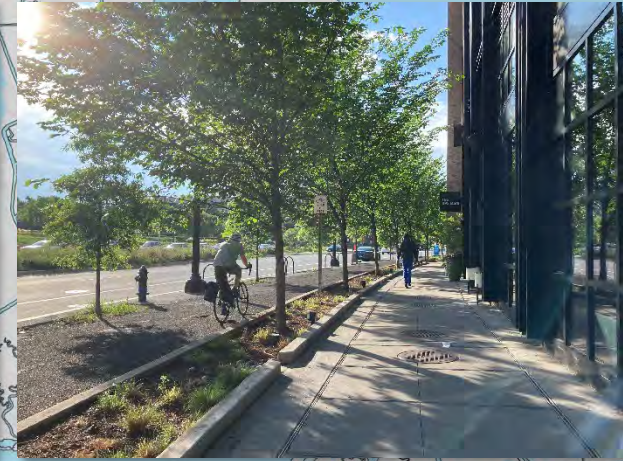
BAYSHORE CONTINUOUS SHORELINE PROTECTION STUDY

- Plan to look at a combination of raising sections of streets along the bayside and incentivizing development of key properties with bayside frontage to achieve enhanced shoreline protection measures to form a continuous bayside flood protection system.



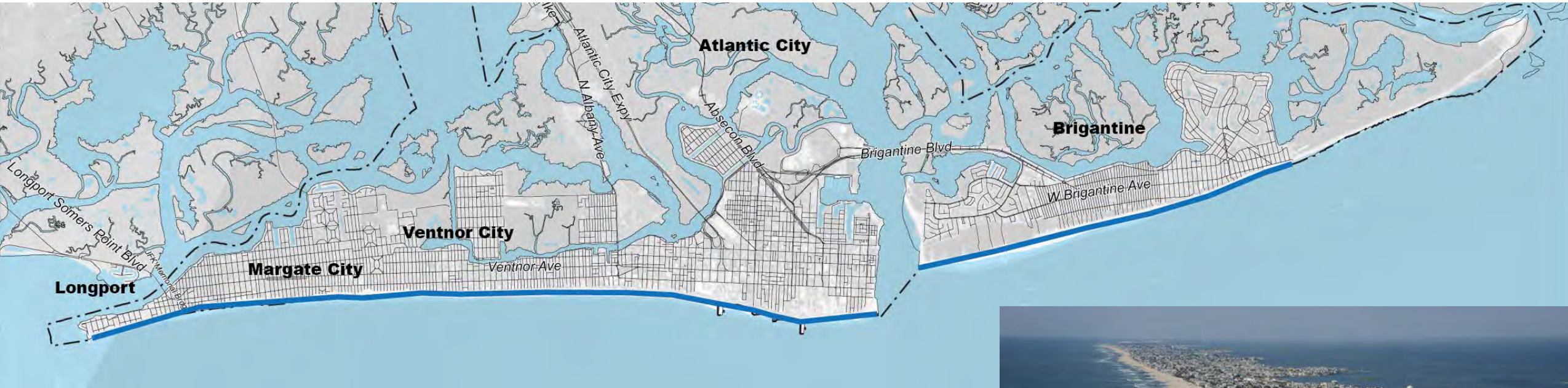
ABSECON BAY BLUE/GREEN WAY

Network of interconnected kayak/canoe trail (Blue way) connecting the Atlantic County bays developed in conjunction with new recreational trail (Green way) along the Blackhorse Pike and roads paralleling the shoreline.



BEACH NOURISHMENT

- Continue beach nourishment program, with gradual elevation increase to address increased height of surge over time



OFFSHORE BREAKWATERS STUDY



Brigantine Beach

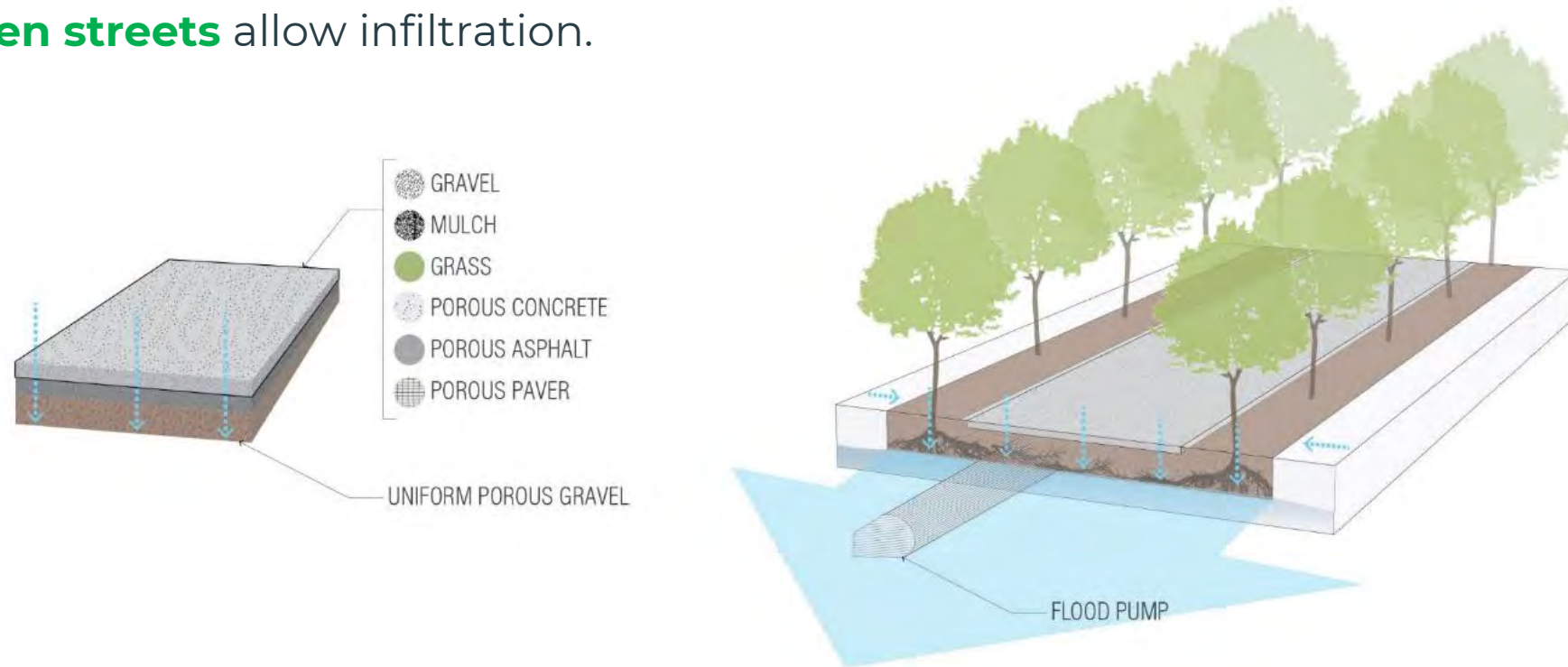


Small-scale Breakwaters

LIVING STREETS FEASIBILITY STUDY AND PILOT PROGRAM

- **Living Streets** Upgrade existing streets for subsurface conveyance without pipes. Networked Green Infrastructure offer groundwater reduction through evapotranspiration and structural soils.
- Use the roadway infrastructure to function as a performative network to **mitigate downstream flash flood risks and facilitate infiltration:**

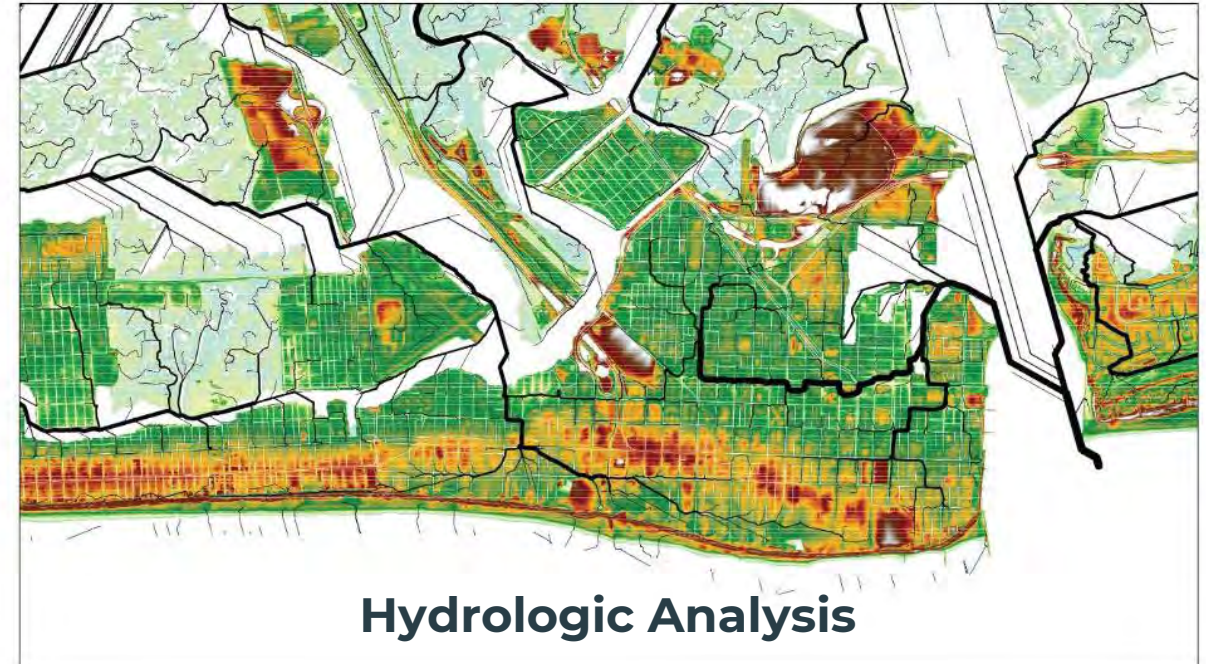
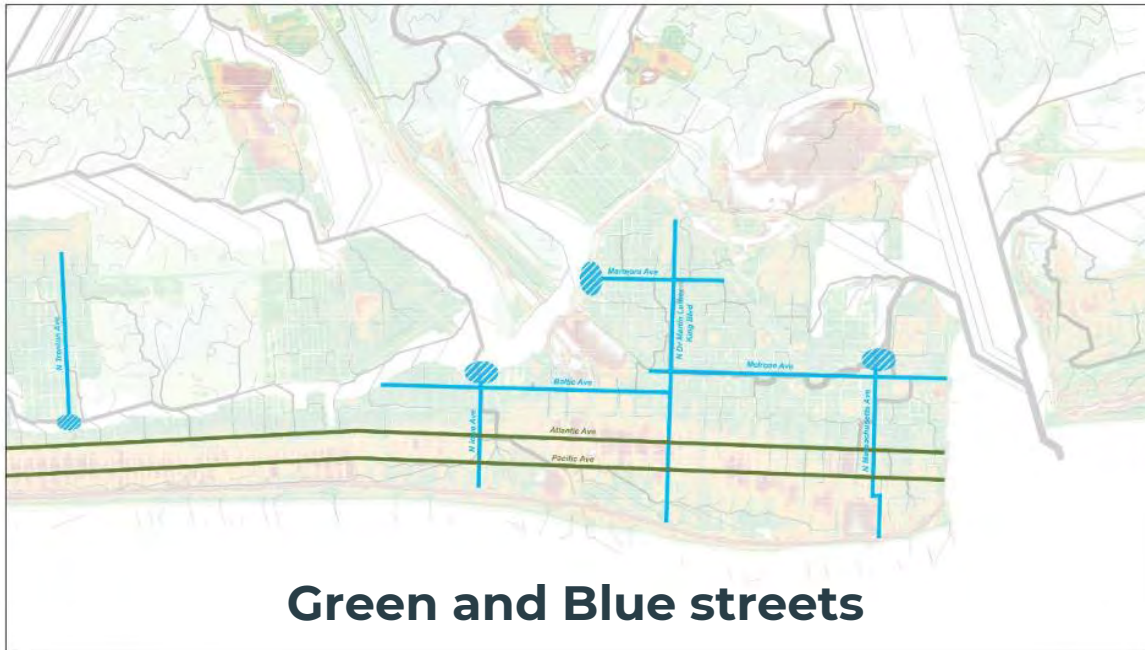
Green streets allow infiltration.



Blue streets convey water flow

LIVING STREETS

- Upgrade existing streets as for subsurface conveyance without pipes
- Networked Green Infrastructure for groundwater reduction through



1. Start with Hydrologic analysis of the existing topography informs the location for the implementation of street adaptations.
2. **Collect, store, and slow water** using the depth of the public right of way.

STORM WATER MANAGEMENT PARKS

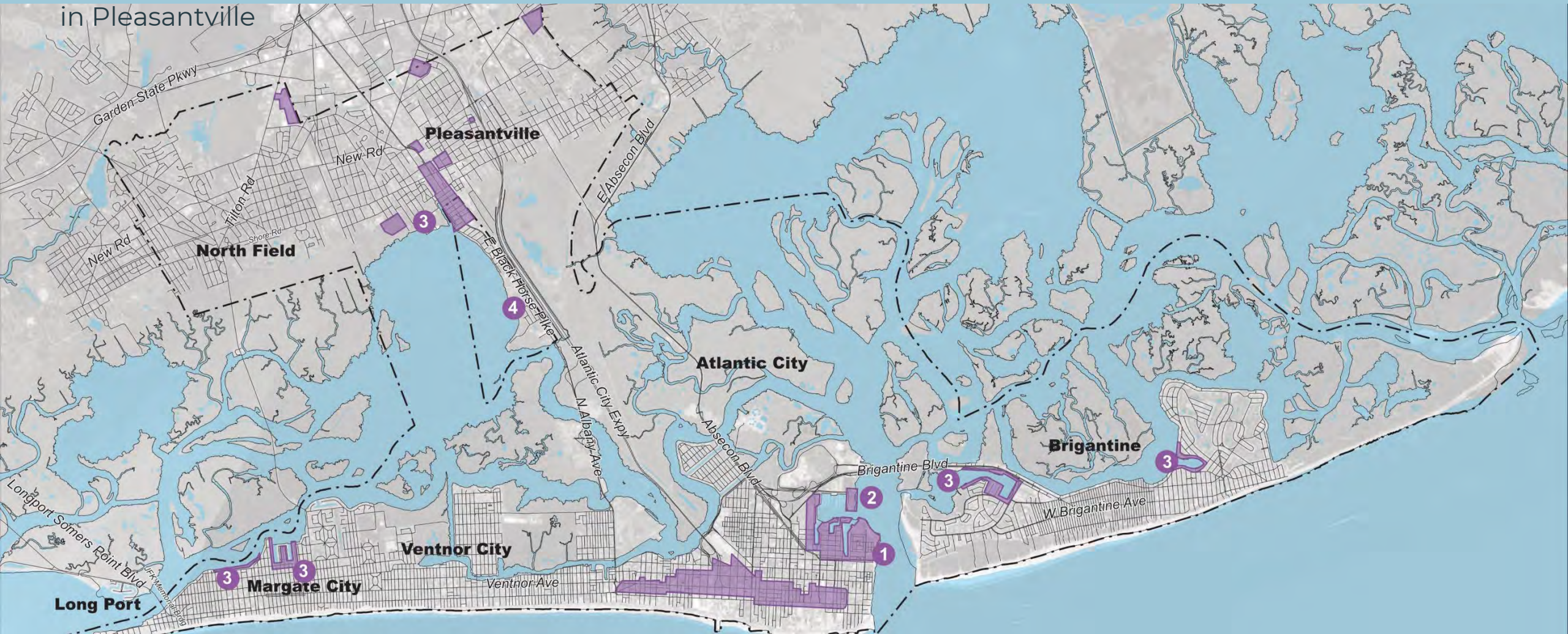
- Create new 'storm water management parks' on city-controlled land.
Link pump stations' effluent to new wetland parks



Conovers Creek

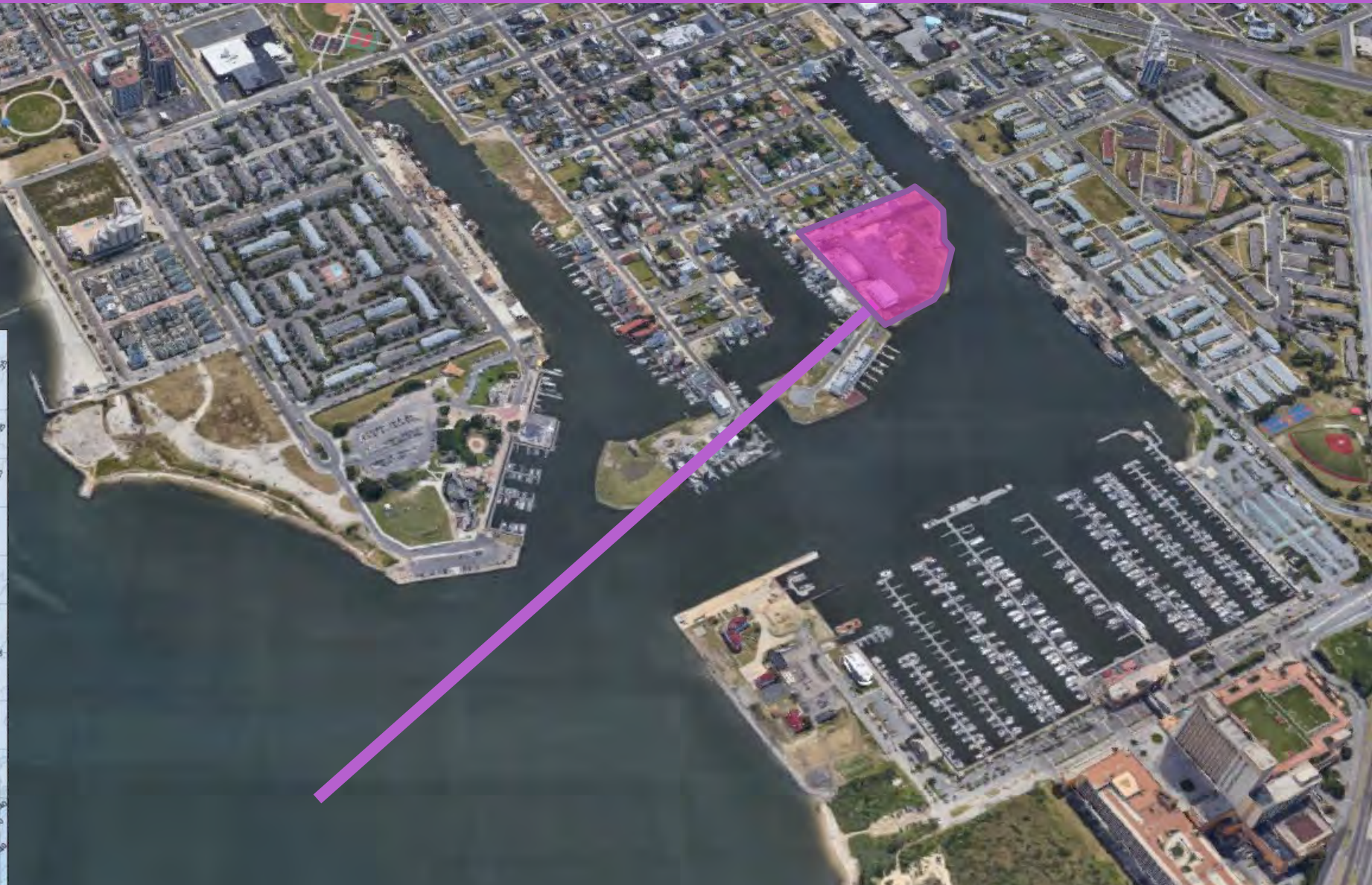
EQUITABLE ECONOMIC DEVELOPMENT

- 1 Rezone all parcels adjacent to Basin and marina for Industrial / Blue Economy related land uses
- 2 Decommission U.S. Coast Guard Station Atlantic City and redevelop for Blue Economy land use
- 3 Waterfront Special District / Development Corridor
- 4 Leverage Black Horse Pike Road raising project to create new boulevard as corridor for economic development in Pleasantville



REZONE GARDNERS BASIN AND DELTA BASIN

Rezone area around
Gardners Basin and
Delta Basin to allow
for Industrial / Blue
Economy related
land uses



BLACK HORSE PIKE STRATEGIC GROWTH CORRIDOR

- Leverage *Black Horse Pike Road raising project* (Route 40 Atlantic County Drainage Project) to create new boulevard as corridor for economic development in Pleasantville



REDEVELOPMENT STUDY AND VISION PLAN FOR LOWER RISK AREAS

- 1 Upzone areas in less vulnerable ('High and Dry') areas with access to housing and jobs to
 - 2 incentivize increased development
- Study potential for increased density to accommodate more affordable housing options for the region's existing residents (workforce etc.)



BADER FIELD COORDINATED DREDGE-SITE RAISING COMPACT

- Coordinated program to dredge spoils from all ongoing and future dredging projects in the region to raise the Bader Field site.
- This will provide important synergies between local projects to improve storm water capacity and maintain navigational channels, and this ongoing economic development initiative.
- Redevelopment of Bader Field is of regional importance in providing a new potential engine of growth and jobs as well as a location for those displaced over time by the impact of climate change.



Feedback

- ❖ Home Elevation Program/Policy Changes
- ❖ Wetland Restoration – incorporate short-term actions
- ❖ Expand Community Solar on Municipal Owned Land
- ❖ New Pump Station Locations
- ❖ Development of a Resiliency and WIND Institute
- ❖ Multi-Jurisdictional Natural Hazard Mitigation Plan Atlantic County – short-term projects that set the stage for Resilient NJ
- ❖ Stormwater Utilities – source of funding
- ❖ Resiliency improvements for the ACMUA water treatment plant in Pleasantville and the ACUA sewer plant in Atlantic City
- ❖ Elevating roadways in specific locations
- ❖ Blue Economy expansion in Atlantic City (NJEDA is funding an effort to remove barriers of development for several sites)
- ❖ Expand transit evacuation options

IV. Feedback on Preferred Scenario

V. Next Steps

Thank you!